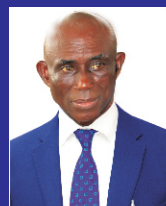




Prof Ndowa Lale
Vice Chancellor



Prof Onyewuchi Akaranta
Coordinator, ACE-PUTOR



Dr. Daprim Ogaji
Centre Leader



Prof Orish Orisakwe
Deputy Centre Leader

OUR COMPETITIVE EDGE

- We offer support for collaboration and interdisciplinary research//
- Established reputation for academic and research excellence//
- Robust support impactful teaching//
- 21st century learning environment//
- Availability of a cutting-edge language laboratory for training of non-English students in an environment that recognises and promotes cultural diversity//
- Well-resourced e-library facility//
- Uninterrupted electricity supply that powers high impact research//
- Easy access to electronic learning resources//
- Excellent students' support services//
- Guarantee of uninterrupted learning calendar//
- Dedicated hostel facility for students//
- Local and international internship support for conference and research publications//

UNIVERSITY OF PORT HARCOURT

Brief Institutional Profile

Established in 1975 as a College of the University of Lagos, the University of Port Harcourt is one of the avant-garde (new, experimental and innovative) tertiary institutions with a mandate to empower the Niger Delta region and the country academically. The University gained full autonomous status in 1977 on the premises of an emergent Trade School outside Choba Community as its temporary site, close to its future Permanent Site known as the University Park.

Unique UniPort, as the Institution is popularly known by its many graduates and stakeholders was accredited by the National Universities Commission (NUC), on a campus status with a growing academic, residential, social and cultural facilities to support a growing community of Scholars and administrators.

A five-star teaching hospital serves as a "laboratory" for the University's top-rated College of Health Sciences and caters to the health needs of a large populace drawn from the South-South and South-East regions of the country.

The University which offers the best in conventional liberal, equal-opportunity education in the arts, engineering, social sciences and science, is located about 18 kilometres, northwest of the central business district of the bustling Garden City of Port Harcourt, Nigeria's second largest seaport and the hub of the lucrative petroleum and gas industry.

The University is uniquely located in-between the southern-most part of the West African tropical rain forest, and the northern fringes of wetlands, swamps, rivers and mangrove forests that make the Niger Delta a special tourist attraction. The University is surrounded by rural agrarian and artisanal communities that have been positively impacted by its presence in the area. The University also runs effective extension services through its specialised research institutes and centres that have encouraged economic growth and social life in its catchment areas and beyond.

The University has been lucky to have very visionary and dynamic Vice Chancellors since its inception, each of whom took the institution to a higher level of infrastructural and academic development.

Unique UniPort welcomes students and visitors to the bustling city of Port Harcourt, the capital of Nigeria's hydrocarbon industry and indeed the Niger Delta region.

WELCOME TO PORT HARCOURT (THE GARDEN CITY OF NIGERIA)

The University is located about 15 kilometres northwest of Port Harcourt. Port Harcourt was founded by the British Colonial Government in 1913, following the discovery of coal near Enugu, the defunct regional capital of Eastern Nigeria. There was a felt need for a seaport and railway terminus to evacuate coal and engage in land trade that was growing on the Eastern hinterland. Port Harcourt has since attracted a cosmopolitan population made up of many nationalities that relish its cultural diversity and bustling night life.

The discovery of oil at Oloibiri in 1956 in present-day Bayelsa State in the Niger Delta heartland brought accelerated development to the city of Port Harcourt and its environs, making it one of the largest cities in West Africa (Gulf of Guinea).

The city is also famous for glass, tyre, brewing, petro-chemicals and liquefied natural gas. Most of the multi-national oil drilling and servicing companies have their offices in Port Harcourt.

The city is a gate-way to the riverine areas of the Niger Delta, and provides ample opportunities for studies in marine biology, eco-tourism and the life sciences. Port Harcourt can be reached by road and sea from all parts of Nigeria; with daily flights to and from major cities of Nigeria and the world.

For more information: Visit: www.aceputor.uniport.edu.ng // Call +234(0)8136592033, +234(0)8129429447 // Mail to: @aceputor@uniport.edu.ng



WORLD BANK AFRICA CENTRE OF EXCELLENCE IN PUBLIC HEALTH AND TOXICOLOGICAL RESEARCH (PUTOR)

University of Port Harcourt, Nigeria



*PUTOR...redefining the art of high impact
research in public health education in Africa*

<https://www.aceputor.uniport.edu.ng>

BACKGROUND TO ACE-PUTOR

The African Centres of Excellence in Development Impact (ACEIII) is a partnership with the World Bank, governments in 12 West and Central African countries' ACE III impact project which PUTOR is part of. It focuses on increasing the quality and relevance of post-graduate education in selected universities through regional specialization, applied research, upfront University-Industry linkage and better regional and international coordination. It is intended to build on the success achieved and expand the reach of the benefits from ACE I. It further aims at up-scaling performing Centres, hence, only performing ACE I Centres will be upgraded to ACE III.

The World Bank Africa Centre of Excellence in Public Health and Toxicological Research (PUTOR), is a collaboration of the University of Port Harcourt School of Public Health, Department of Experimental Pharmacology and Toxicology, Nursing Sciences, Biochemistry, Centre for Health and Development, and Institute for Marine Pollution Studies.

VISION

Our vision is to become a centre of excellence in providing highly sought-after, world-class academic and professional programmes which are recognised for local relevance, international excellence and global impact in the field of public health, toxicology, human/community nutrition and midwifery and child health nursing.

MISSION

Our mission is to provide a platform to congregate highly skilled human resource both within and outside the University of Port Harcourt; build a robust resource of highly skilled and motivated public health professionals who are equipped with current knowledge, skills and competencies required to improve the practice of public health, human/community nutrition, toxicology and midwifery and child health nursing; produce cutting–edge research projects to solve public health issues arising from oil and gas sectors and undertake consultancy and community services.

PHILOSOPHY

The philosophy of PUTOR is: commitment to academic freedom, tolerance, probity, equal opportunity and respect for cultural diversity.

STRUCTURE/OPERATIONAL GUIDELINES FOR PUTOR

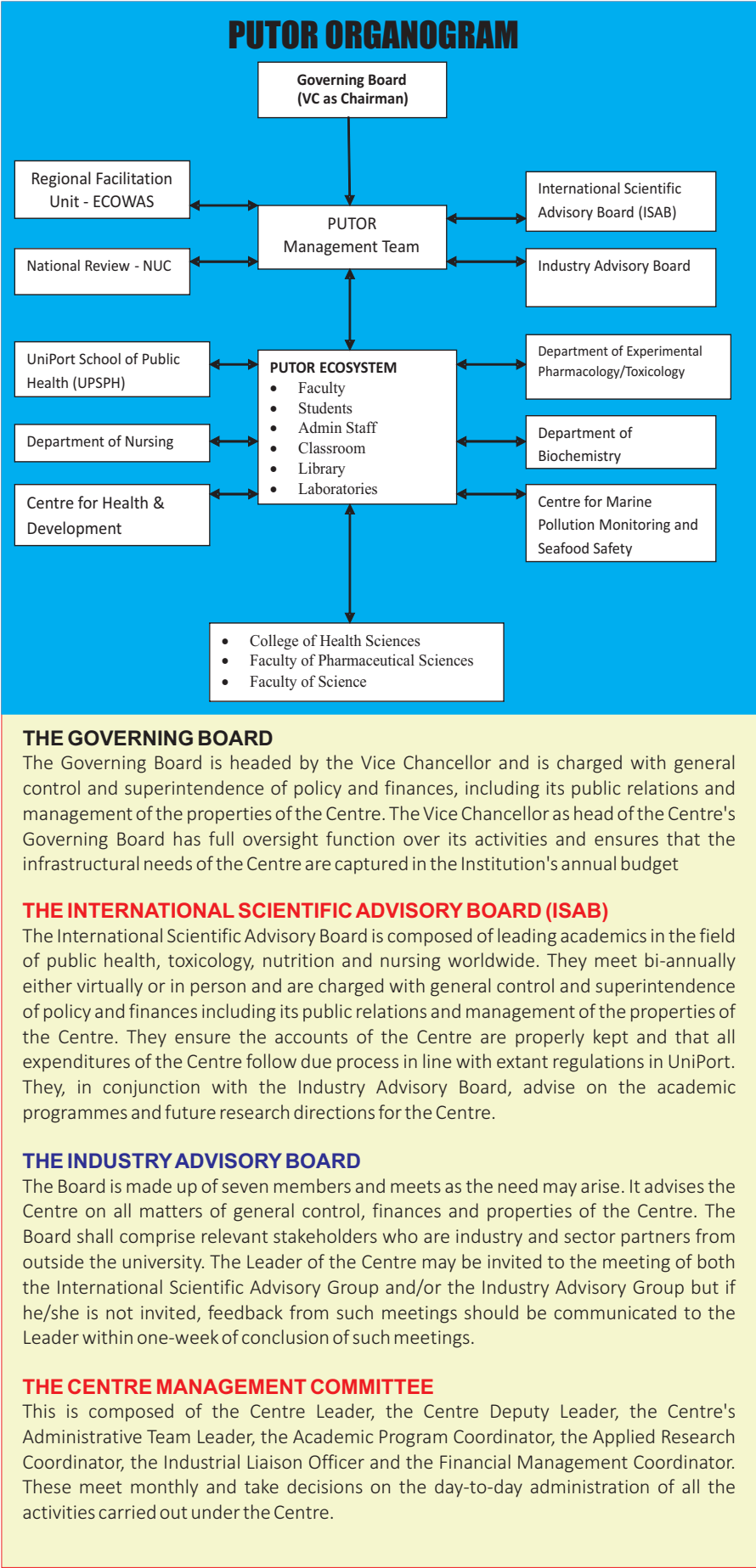
PUTOR has a Steering Committee, International Scientific Advisory Board and an Industry/Sector Advisory Board. In addition, the Centre has other ad-hoc committees that would enhance its activities. These include the Academic, Applied Research, Liaison, Finance, Audit and Communication Committees

PUTOR is expected to initiate institutional and governmental partnerships, encourage increase in female enrollment and also plan for sustainability of the Centres after the World Bank funding project comes to an end. It is also expected to have a foundational structure and a regional network with regards to faculty training and curriculum development.

CENTRE MANAGEMENT AND GOVERNANCE

The Centre's coordination and management structure consist of the following:

- The Governing Board
- The International Scientific Advisory Board (ISAB)
- The Industry Advisory Board
- The Centre Management Committee
- The Academic Board
- The Applied Research Coordinating Team



Functions of Management Committee include:

- Planning and coordinating review meetings and activities of the ACE project;
- Managing the project administration, preparing reports & presentations; providing management information accordingly;
- Develop methodologies for planning and implementation of project activities;
- Tracking progress against project plan and allocated budget;
- Development of project concept notes and terms of reference for project activities;
- Development of project annual work plan for National Universities Commission, ACE-PUTOR, and collating of work and procurement plans of all the ACEs for submission to World Bank and Association of African Universities.
- Draw-up budget estimates for line activities in the Work Plan and other ACE activities;
- Participate in meetings to share perspective as well as work collaboratively to contribute to achieving the Project Management team's planned objectives and outcomes.

PUTOR MANAGEMENT COMMITTEE

NAME	DESIGNATION
Onyewuchi Akaranta	Coordinator, World Bank ACE-PUTOR
Daprim Ogaji	Centre Leader
Orish Orisakwe	Deputy Centre Leader
Nengi Isagua	Head, Account
Anselem Umor	Internal Auditor
Williams Wodi	Communication Officer
Kingsley Patrick-Iwuanyanwu	Academic Program Coordinator/M&E Officer
Oluseye Babatunde	Applied Research Coordinator
Faith Diorgu	Industrial Liaison Officer
Henry Amadi	Procurement Officer
Best Ordinioha	Public Health Research Team Leader/Environment & Social Safeguard Officer
Anthonet Ezejiofor	Toxicological Research Team Leader
Catherine Ikewuchi	Nutrition Research Team Leader
Josephine Gbobbo	Nursing Research Team Leader
Worlu Rosanna	Student Enrolment and Support Officer
Confidence Igwe	Head, Admin/Desk Officer
	Dean, School of Graduate Studies
	Director, Institute of Marine Pollution Studies
	Director, Exchange and Linkage Programmes Unit
	Director, UniPort School of Public Health
	HoD, Biochemistry
	HoD, Nursing
	HoD, Experimental Pharmacology and Toxicology

CENTRE LEADER

The Centre Leader is responsible for coordinating the design and validation of all academic programmes of course content, training and certifications.

S/he is also responsible for strategy and planning, student/staff management and administration, financial management, public relations advocacies.

The Centre Leader presides as Chairman in all meetings of the Centre, except meetings of the Governing and Advisory Boards.

S/he coordinates ACE activities, resources and equipment, as well as tracks progress & effectiveness of the Centre, etc.